

DIRECTIONS TO THE NEW VENUE FOR LATIN FEVER, THURSDAY, TEA DANCES

STARTING FROM 20TH JULY 2023. NEW TIMES: 1.45PM TO 3.45PM

It may seem complicated at first but, just think, once you have found it once you will know where to come to!

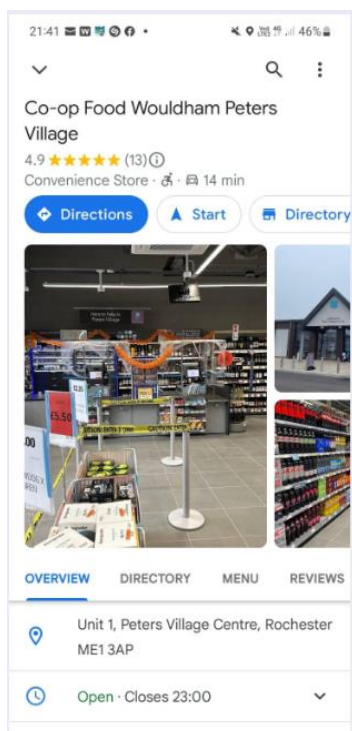
Peters Village, and especially the Village Hall, are new and so inevitably Sat Navs are not yet reliably taking you to the location. Therefore, please familiarise yourself with the route even if you are planning to try to use your Sat Nav so you are sure that it's taking you in the right direction!

Address:

Peters Village
Village Hall
8 Tolhurst Close
Wouldham
Near Rochester
Kent
ME1 3AP

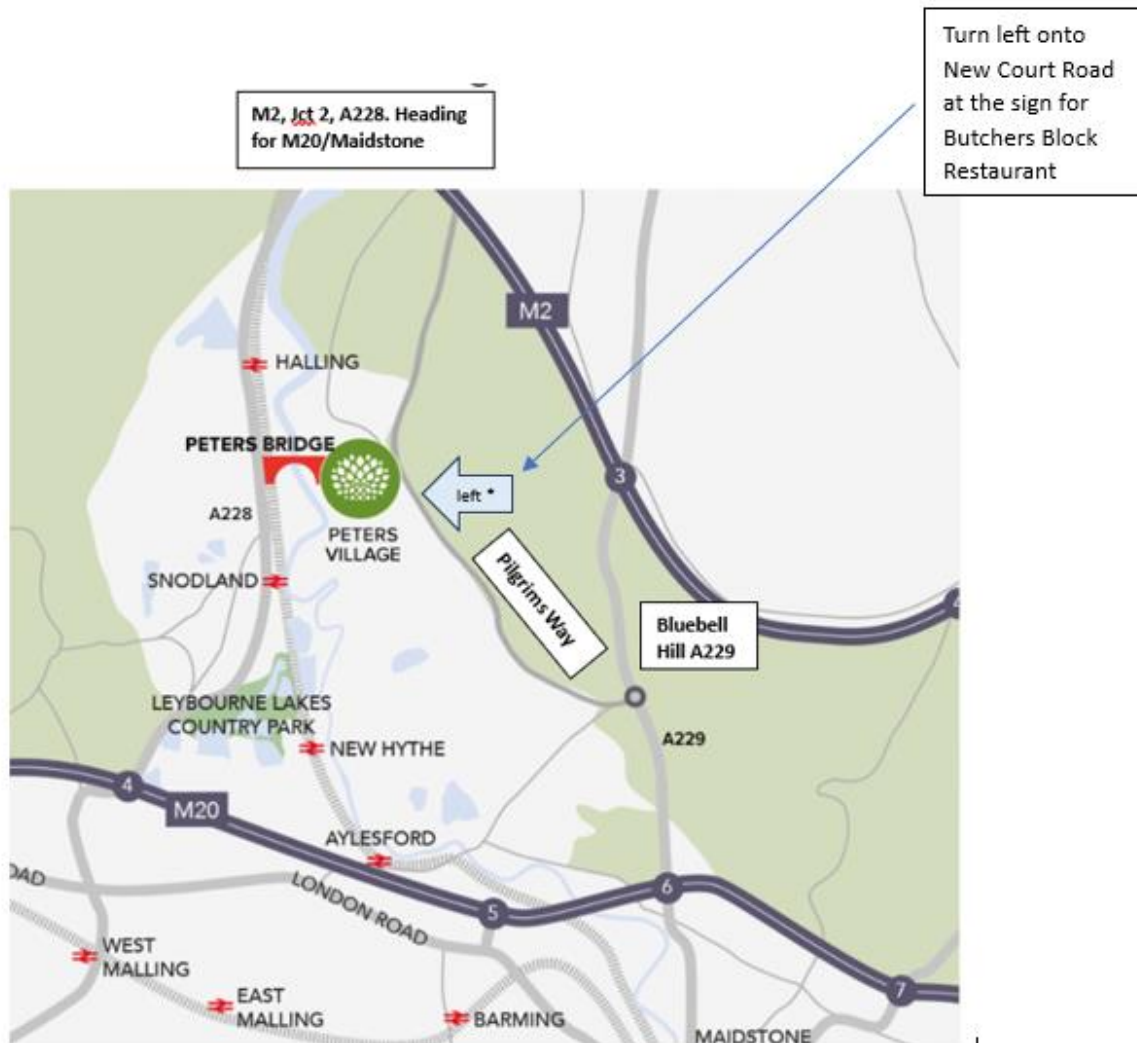
The Village Hall is located by the newly opened Co-Op Foodhall in Peters Village. Asking your Sat Nav to take you to the Co-Op does seem to work more accurately than putting in the postcode (even though the postcode is the same as for the hall!)

However, please be sure that if you do decide to do a Google Search for Co-Op Peters Village, and then get it to give you the Directions to take you there, please make sure that it is the Peters Village Co-Op you select and NOT the Rochester Co-Op which is likely to come up in the same Search

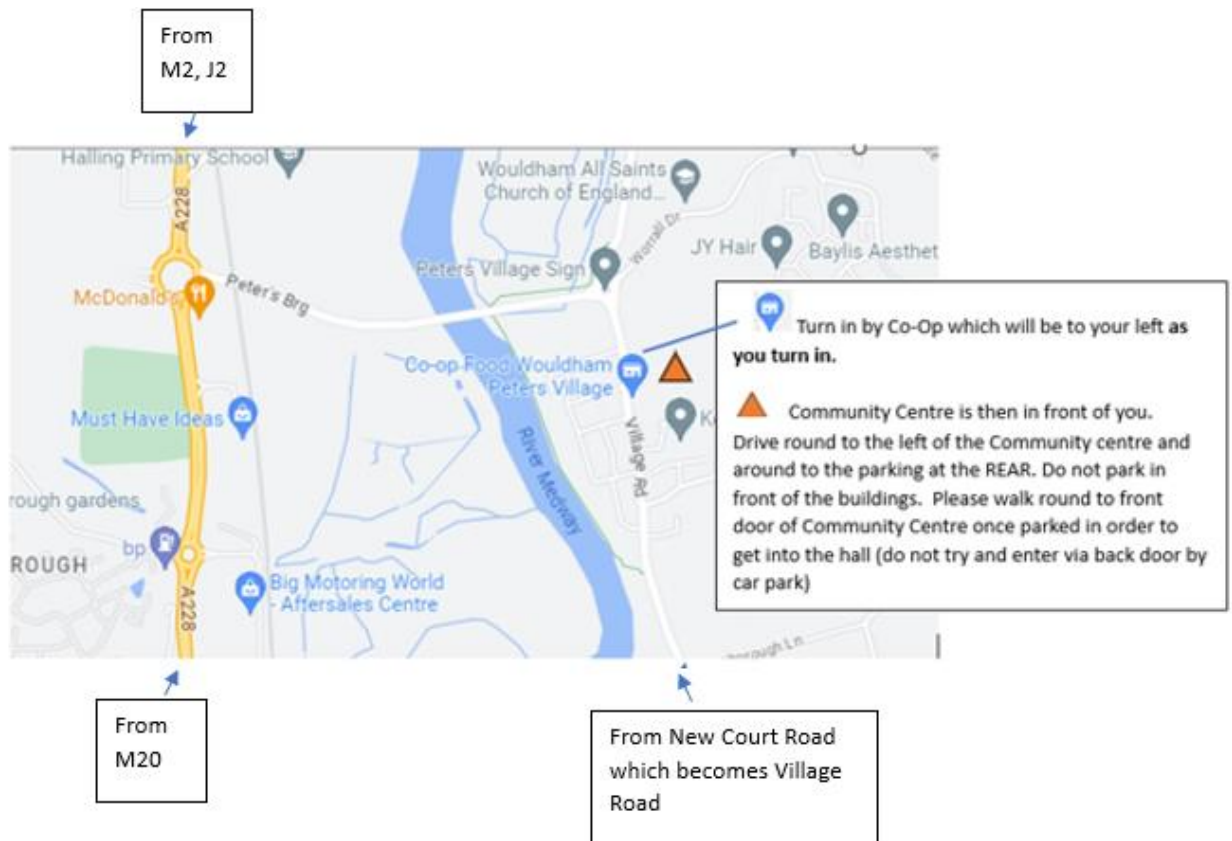


MAP FROM THE DEVELOPMENT SHOWING THE LOCATION OF PETERS VILLAGE, near Wouldham.

You can easily reach Peters Village from Junction 2 of the M2 down the A228, then going over Peters Bridge, and then right at the roundabout;
from Junction 3 of the M2 down A229 Bluebell Hill (turning off half way down, towards Eccles and then along Pilgrims Way, and then left onto New Court Road by the sign for Butchers Block restaurant);
or from Junction 4 from the M20, then going over Peters Bridge, and then right at the roundabout.



Whichever way you go you are looking out for the Co-Op in the centre of the new Peters Village on the main Village through-road.
Read on for what to do when you have turned in by the Co-Op



It is very important, please, to use the parking around the BACK of the Village Hall, and not the parking in front of you, which is for the Co-Op, shops, Dentist and Doctors.

It is also important to then walk back round from the Car Park at the rear, to the Village Hall entrance doors at the front of the building. You cannot get entry via the rear door to the building even though you will be able to see the Hall where the dance is set up.



We can't wait to welcome you back to the Thursday Tea Dances